

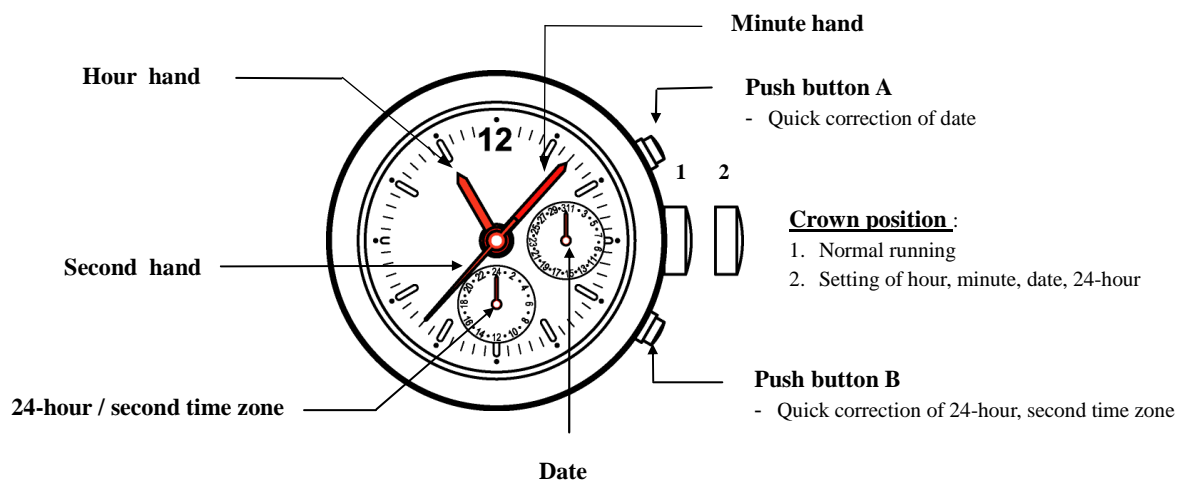
Instruction Manual

Room 1605, 16/F., Eastern Centre,
1065 King's Road, Quarry Bay, Hong Kong
Tel: (852) 2168 3388 Fax: (852) 2552 3181
Email: sales@isa-pacific.com
Web site: www.isaswiss.com

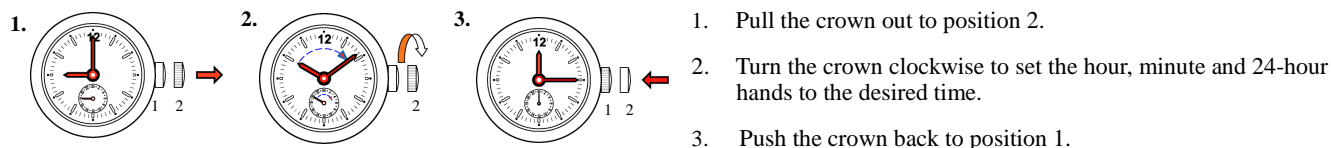
Calibre : 9238 / 1960

Function : Date, 24-hour / second time zone

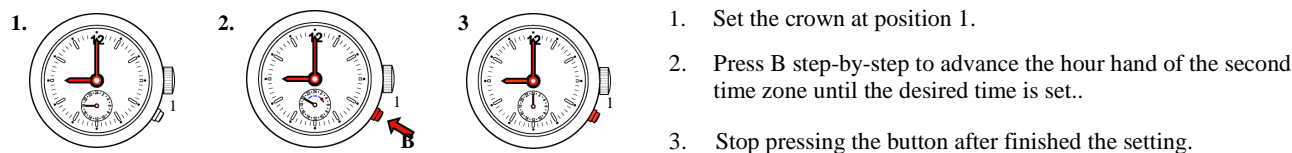
Illustration



A. Set the time – Hour, Minute, and 24 Hour



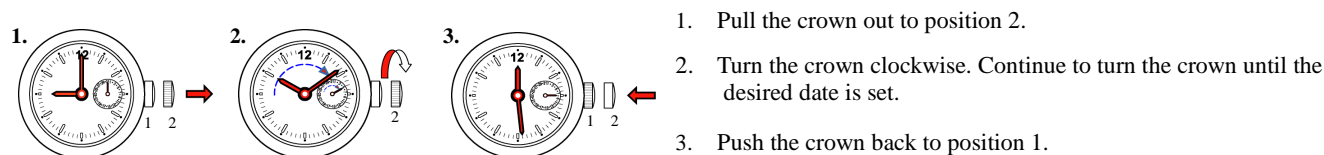
B. Set the Second Time Zone



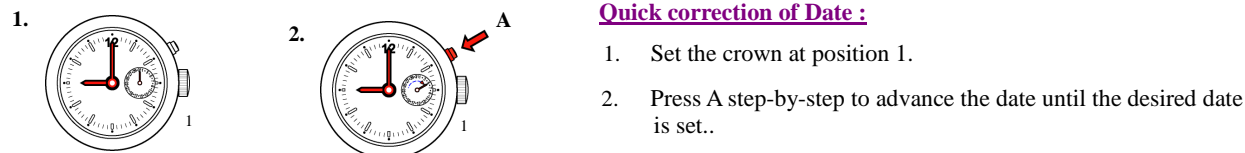
!! Attention !!:

When using push button B to set the second time zone hour, the centre minute hand must be set to between 55th minute and 05th minute at any hour.

C. Set the Date



Quick correction of Date :



!! Attention !!: The date advances at 00:00 midnight, not 12:00 noon.

Battery : 371 – SR920SW